

BASALTINE



BASALTINE



BASALTINE / WHITE p.6



BASALTINE / SAND p.12



BASALTINE / LIGHT GREY p.18



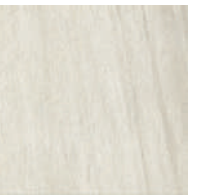
BASALTINE / DARK GREY p.24



BASALTINE / NUT p.30

colors

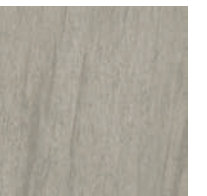
BASALTINE / WHITE



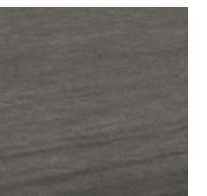
BASALTINE / SAND



BASALTINE / LIGHT GREY



BASALTINE / DARK GREY



BASALTINE / NUT



With the option of using either a natural or grip finish, Basaltine is ideal for both walls and floors. The six sizes, available in rectified format also help to create clean and modern atmospheres.





Basaltine is a color body porcelain tile inspired by the **natural elegance** of volcanic stone, a contemporary look designed to satisfy the most sophisticated aesthetic and architectonic tastes and requirements.



BASALTINE / WHITE

BASALTINE





12"x12" / **WHITE** . fireplace: 12"x24" / **NUT**



BASALTINE / SAND

BASALTINE





24"x24" / SAND



12"x24". 24"x24" / SAND



BASALTINE / LIGHT GREY



24"x24" / LIGHT GREY



12"x24" / LIGHT GREY





BASALTINE / DARK GREY

BASALTINE







BASALTINE / **NUT**

BASALTINE





12"x12". 12"x24" / NUT



12"x24" / NUT

SIZES & SHADE VARIATION

sizes:

24"x48"
Rectified



1096320 White
1096321 Sand
1096322 Nut
1096323 Light Grey
1096324 Dark Grey

24"x24"
Rectified



1096219 White
1096220 Sand
1096221 Nut
1096222 Light Grey
1096223 Dark Grey

12"x24"
Rectified



1096209 White
1096210 Sand
1096211 Nut
1096212 Light Grey
1096213 Dark Grey

6"x24"
Rectified



1096214 White
1096215 Sand
1096216 Nut
1096217 Light Grey
1096218 Dark Grey

12"x12"
Rectified



1096199 White
1096200 Sand
1096201 Nut
1096202 Light Grey
1096203 Dark Grey

12"x12"
Rectified Grip finish

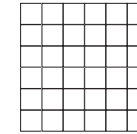


1096204 White
1096205 Sand
1096206 Nut
1096207 Light Grey
1096208 Dark Grey

Colors shown may vary from actual product.
Final selection should be made from actual product samples.

mosaics & trim pieces:

12"x12"
mosaic 2"x2"



1096164 White
1096165 Sand
1096166 Nut
1096167 Light Grey
1096168 Dark Grey

3"x12" Bullnose



1096225 White
1096226 Sand
1096227 Nut
1096228 Light Grey
1096229 Dark Grey

6"x12" Cove Base *special order only

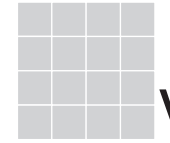


1096230 White
1096231 Sand
1096232 Nut
1096233 Light Grey
1096234 Dark Grey

Cleaning & Maintenance / Routine Care Instructions



Scan the QR code with your smartphone.



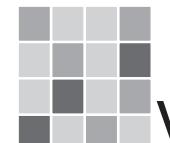
V1

UNIFORM APPEARANCE
Differences among pieces from the same production run are minimal.



V2

SLIGHT VARIATION
Clearly distinguishable differences in texture and/or pattern with similar colors.



V3

MODERATE VARIATION
While the colors present on a single piece of tile will be indicative of the colors to be expected on the other tiles, the amount of colors on each piece will vary significantly.




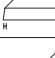
V4

SUBSTANTIAL VARIATION
Random color differences from tile to tile, so that one tile may have totally different colors from that on other tiles. Thus, the final installation will be unique.



Technical Specifications

This product meets or exceeds all standards described in ANSI A137.1.

	SPECS	TEST METHOD	INDUSTRY STANDARD	MILE@stone VALUES	
	WATER ABSORPTION	ASTM C373	≤0.5%	≤0.4%	
	CERTIFIED PORCELAIN TILE <small>0.5% or less water absorption</small>	ASTM C373	0.5%	Meeting the water absorption criteria of the American national standard PTCA	
	SURFACE WEAR RESISTANCE	ANSI A137.1	Surface Wear-resistance properties of glazed vitreous and porcelain tiles.	ALL RESIDENTIAL / COMMERCIAL	
	CHEMICAL RESISTANCE	ASTM C650	A tile sample is placed in continuous contact with a variety of chemicals for 24 hours. No sample must show visible defects.	NOT AFFECTED	
	D.C.O.F. AcuTest®	ANSI A326.3	≥0.42 WET	≥0.42 WET	
	STAIN RESISTANCE	ASTM C1378	Surfaces are exposed to staining agents for 24 hours followed by four cleaning procedures. Results are recorded post cleaning.	NOT AFFECTED	
	BREAKING STRENGTH	ASTM C648	≥250 lbf	8mm ≥300 lbf 10mm ≥400 lbf	
	RESISTANCE TO FREEZE	ASTM C1026	A tile sample is subjected to repeated processes of freezing and thawing. Sample must show no visible defects.	RESISTANT	
	WARPAGE EDGE	ASTM C485	±0.40% or ±0.05 in (±1.8 mm)	± 0.40%	Rectified
	WARPAGE DIAGONAL	ASTM C485	±0.40% or ±0.07 in (±1.8 mm)	± 0.40%	Rectified
	WEDGING	ASTM C502	±0.25% or ±0.03 in (±0.8 mm)	± 0.25%	Rectified
	WARPAGE EDGE	ASTM C485	±0.50% or ±0.07 in (±1.8 mm)	± 0.50%	Calibrated
	WARPAGE DIAGONAL	ASTM C485	±0.50% or ±0.07 in (±1.8 mm)	± 0.50%	Calibrated
	WEDGING	ASTM C502	±0.50% or ±0.08 in (±2.0 mm)	± 0.50%	Calibrated
	THICKNESS	ASTM C499	Range: ± 0.04 in	≤0.04 in	

• Due to the inherent nature of fired porcelain tile, it is important to note that the coefficient of friction may vary within and between product runs.

Packaging Specifications

SIZES	METRIC (CM)	THICKNESS (MM)	PIECES PER BOX	SQ. FT PER BOX	WEIGHT PER BOX	BOXES PER PALLET	UOM PER PALLET	WEIGHT PER PALLET*
FIELD TILES								
12"x12" RECTIFIED	30x30	10 mm	13	13	53.3	48	624	2,558
12"x24" RECTIFIED	30x60	10 mm	6	12	49.2	48	576	2,362
6"x24" RECTIFIED	15x60	10 mm	12	12	49.2	48	576	2,362
24"x24" RECTIFIED	60x60	10 mm	3	12	49.2	36	432	1,771
24"x48" RECTIFIED	60x120	10 mm	3	24	115.2	21	504	2,419
MOSAICS AND COORDINATING TRIMS								
3"x12" BULLNOSE	7.5x30	10 mm	12	3	12.3	168	2,016 pcs	2,066
6"x12" COVEBASE	15x30	7 mm	10	5	17.5	64	640 pcs	1,120
2"x2" MOSAIC 12"x12"	30x30	10 mm	10	10	41	45	450 pcs	1,845

* WEIGHT PER PALLET DOES NOT INCLUDE PALLET WEIGHT ITSELF.
ALL OTHER SIZES WILL BE PACKAGED AS ORDERED.
PLEASE CONTACT MILESTONE CUSTOMER SERVICE AT 1-877-356-7461 FOR PACKAGING INFORMATION.

MINIMUM GROUT SIZE RECOMMENDED = 5 MM (OR APPROX. 3/16") IF STAGGERED TILE PLACEMENT, WE RECOMMEND USING A 30% OFFSET. IF SPECIFIED BRICK PATTERN WITH 1/2 PATTERN MANDATORY, A BIGGER GROUT IS RECOMMENDED TO HIDE IMPERFECTIONS OF INSTALLATION (MINIMUM 1/4").

Green Memberships & Accreditations

	DESCRIPTION
	Defines post-consumer content of as much as 3% recycled glass which reduces landfill impact.
	Defines pre-consumer content of as much as 45% recycled material which reduces our carbon footprint.
	Florim USA sources >95% raw material within a 500 mile radius, which results in a smaller carbon footprint.
	Tile Council of North America and the American National Standards Institute's standard for sustainability and environmental impact.
	A declaration that Florim USA values the environment and works daily to minimize our adverse impact upon it.
	The Health Product Declaration Collaborative transparency declaration for all of Florim USA's naturally occurring materials.
	Certification of plant and product specific Environmental Product Declaration (EPD) which tracks environmental impacts from the production of porcelain tile.
	Underwriter's Laboratories certification of low emitting materials. Florim USA is Green Guard Gold certified.
	Bureau Veritas Standards Program verifies and certifies both pre- and post-consumer recycled content.
	Florim USA actively participates in the Tile Council of North America which allows us to be on the forefront of advances in the tile industry and its standards.
	USGBC is committed to suit a more sustainable life. Florim USA supports this mission by manufacturing products which aid architects in achieving USGBC certification.
	Florim USA's sustainability and social practices support the mission of The International Living Future Institute which strives to create a socially just, culturally rich, and ecologically restorative community.
	The Tennessee Recycling Coalition is dedicated to promoting recycling and sustainable material management practices, and awarded Florim USA the Tennessee Recycler of the Year award for 2020.

This product meets or exceeds all standards described in ANSI A137.1.
Este producto cumple o excede todos los estandares de ANSI A137.1.

Progress that invests in the entire society

As an active member of the U.S Green Building Council, MILE[®]stone spreads awareness to the community and encourages the use of building solutions through environmentally friendly practices.

Our products positively contribute to the requirements for obtaining the LEED (Leadership in Energy and Environmental Design) and WELL (IWBI) certifications.

A commitment to environmental sustainability and responsibility

We are committed to conscious development that minimizes the negative impact of manufacturing production on the environment. Our general approach to sustainability intersects with our business strategy to embrace three areas of responsibility: economic, social, and environmental. Some ways we prove this are:

- Products containing as much as 45% recycled content.
- Post-consumer recycled content levels as much as 3%.
- Zero industrial wastewater discharge.
- A 99% internal process recycling rate.
- Local sourcing of >95% raw materials (within 500-mile radius of factory) resulting in low transportation related carbon emissions.

MILE[®]stone is taking these and other steps, as well as actively investing to reduce carbon emissions to ensure that we reach full carbon neutrality by 2030.



300 International Blvd. Clarksville, TN 37040 | www.milestonetiles.com | 1-877-356-7461

